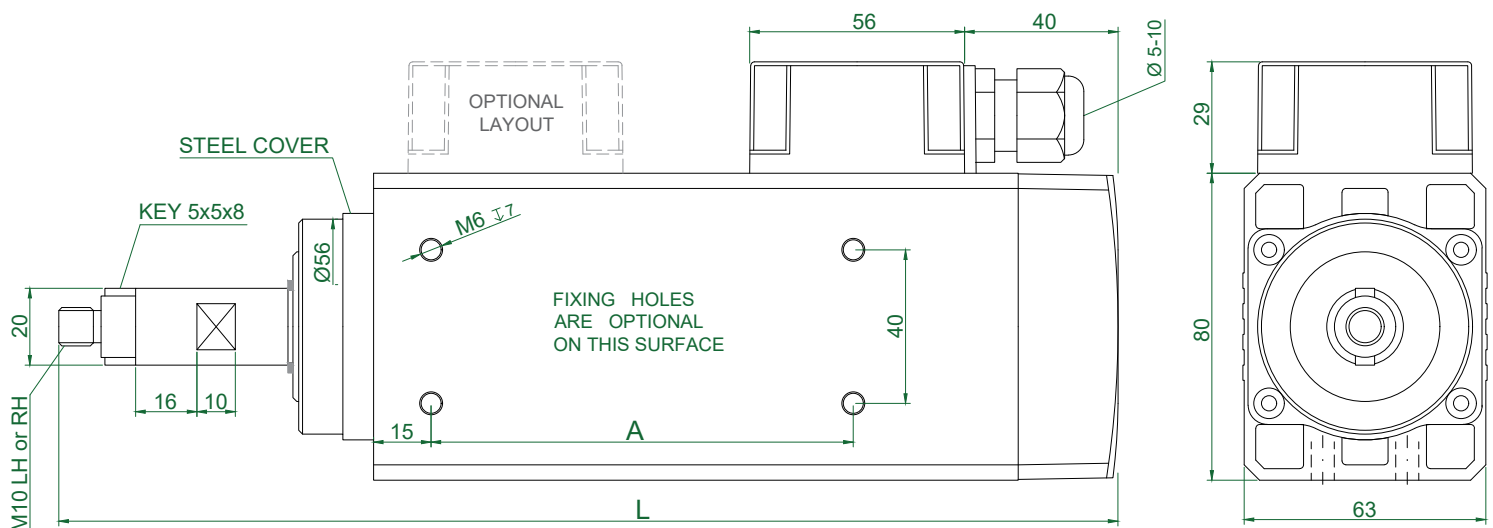
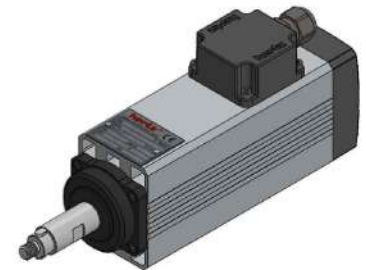
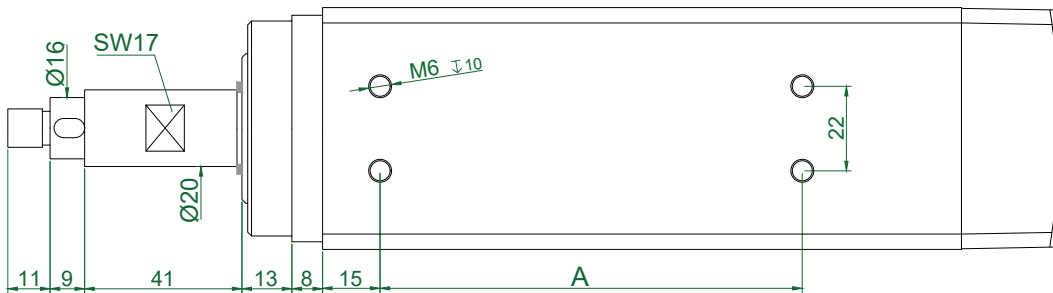


TYPE	Base Speed	Power kW	Frequency (Hz)			Voltage			Absorption	
	rpm		Min	Base	Max	Base	Optional	A (220v)	A (380v)	
HM55- 85	6000	0,22	70	100	150	220	380	220/380	1,50	0,87
HM55- 95	6000	0,27	70	100	150	220	380	220/380	1,90	1,10
HM55- 115	6000	0,37	70	100	150	220	380	220/380	2,20	1,20
HM55- 55	12000	0,20	150	200	300	220	380	220/380	1,44	0,84
HM55- 60	12000	0,22	150	200	300	220	380	220/380	1,50	0,87
HM55- 70	12000	0,35	150	200	300	220	380	220/380	2,00	1,16
HM55- 85	12000	0,37	150	200	300	220	380	220/380	2,20	1,20
HM55- 95	12000	0,55	150	200	300	220	380	220/380	2,60	1,50
HM55- 115	12000	0,75	150	200	300	220	380	220/380	3,80	2,20
HM55- 55	18000	0,25	200	300	360	220	380	220/380	1,60	0,92
HM55- 60	18000	0,27	200	300	360	220	380	220/380	1,90	1,10
HM55- 70	18000	0,45	200	300	360	220	380	220/380	2,40	1,40
HM55- 85	18000	0,55	200	300	360	220	380	220/380	3,20	1,80
HM55- 95	18000	0,75	200	300	360	220	380	220/380	3,70	2,20
HM55- 115	18000	1,10	200	300	360	220	380	220/380	5,10	3,00



TYPE	A	L	Apr. Weight Kg
HM55.55_L41.9MK-CK-1R	85	236	2,500
HM55.60_L41.9MK-CK-1R	85	241	2,550
HM55.70_L41.9MK-CK-1R	85	251	2,700
HM55.85_L41.9MK-CK-1R	110	266	2,950
HM55.95_L41.9MK-CK-1R	110	276	3,100
HM55.115_L41.9MK-CK-1R	110	296	3,450

PLUG CONNECTION
(OPTIONAL)

